

## E-ssential 1HU Optical fibre Patch Panel

- Empty OF patch panel without sliding mechanism.
- Suitable for direct termination or splicing.
- Can be used as splitter box.
- Available in two versions 24ST and 24 SC.
- Three positions faceplate for patch cord bending radius.

### Description

#### Application

Nexans Essential 1HU Optical Fibre Patch Panel has been designed to support :

- up to 24 ST ports or
- up to 12 Dual SC ports.

It combines a cost effective design with high port density. It is suitable for tight buffer cables (direct termination) or loose tube cables using splice tray (N890.001).

It also can be used as a splitter(\*)

#### Features

- 19" width
- Two versions ST and SC
- Blind face plates are available.
- 3 positions :

-flushed

-15 mm recessed

-30 mm recessed

- Easy identification : couplers are numbered on the face plate.
- Cable entrance is possible through a cable gland (PG16) or through a rectangular opening (Using tie wraps).
- Cage-nuts as well as fibre holders are included.

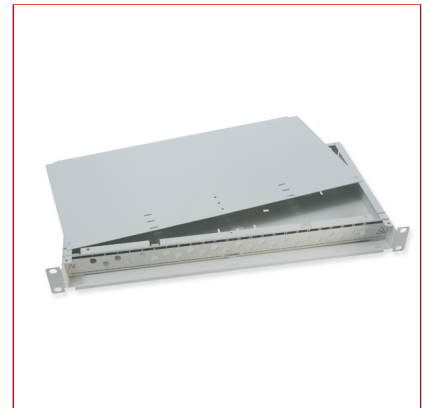
(\*) splitter allows to split multitube cable to at most 6 Nexans E-ssential OF Patch Panels.

For use as splitter, you need:

-Splitter tube (N890.044)

-Cable gland for splitter (N890.043)

-Blind plate (N441.132)



**e**ssential

## E-ssential 1HU Optical fibre Patch Panel

### Contact

Structured Cabling  
20 Harbour Drive  
#07-03 PSA Vista  
117612  
Singapore  
Phone: +65 63170 101  
Fax: +65 63170 103/04  
ron.lim@nexans.com, johnny.  
low@nexans.com

## E-ssential 1HU Optical fibre Patch Panel

### Characteristics

#### Dimensional characteristics

Heightunit	1 U
Width	19 in
Depth	233 mm

#### Usage characteristics

Component function	Patch panel
--------------------	-------------

### Product List

Nexans ref.	Name	Connector type
N441.122	E-ssential OF Empty Patch Panel with SC faceplate	SC
N441.121	E-ssential OF Empty Patch Panel with ST faceplate	ST